

HAWAII COFFEE TABLE

CT98-HW-STD



DESCRIPTION

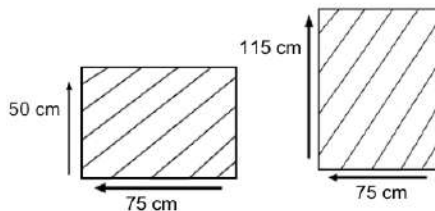
Sturdy and rust-proof aluminium frame with all weather REHAU/Viro weave. Available in various weave colors. 6mm Tempered Glass Top. Combining traditional weaving techniques with modern manufacturing techniques, it is highly durable and easy to maintain.

DIMENSIONS

Total Width: 110 cm
Total Depth: 70 cm
Height: 45 cm

PACKAGING

Weight : 13.00 kg
Volume : m3
Packing : 1 / box



SYNTHETIC WICKER

Rehau



Cappuccino



Black



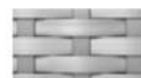
Whitewash



Honey Wicker



White



Shimmer Nickel



Java Brown



Shimmer Russet

Viro



Moccacino



Dark Brown



Java G3