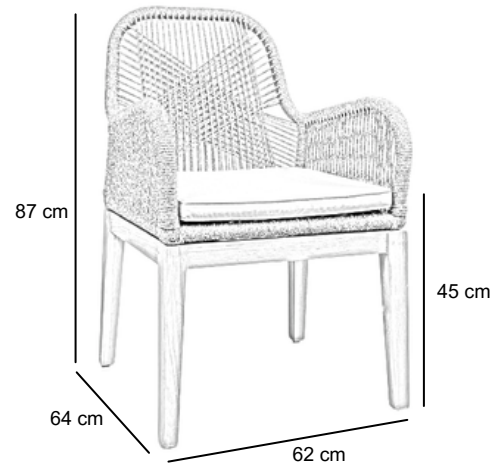


MARINA CHAIR

MRNC-TT-STD



DESCRIPTION

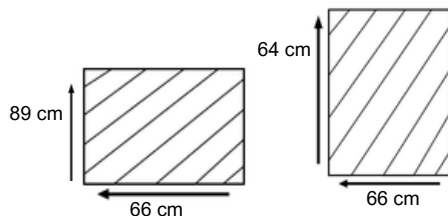
Elegant, ergonomic and contemporary design chairs. Made using hand selected high grade plantation grown Indonesian teak wood base. The top is made using a new generation weaving material that combines the physical touch of woven fabric with the strength of synthetic weaving material. You can now enjoy Marina collection with the comfort and style of upholstery design even without the cushions.

DIMENSIONS

Total Width: 62 cm
Total Depth: 64 cm
Total Height: 87 cm
Seat Height: 45 cm

PACKAGING

Weight : 7.7 kg / unit
Volume : 0.17 m³
Packing : 2 / box



FINISHING



AM I - Stain



Teak Brown

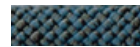


Natural

WEAVING



182



1602



168



101



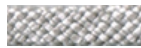
111



070



044



101



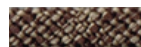
169



136



091



081